

EN IEC 62311:2020
ASSESSMENT REPORT

For

Shenzhen Sonoff Technologies Co.,Ltd.

1001, BLDG8, Lianhua Industrial Park, shenzhen, GD, China

Tested Model: S55TPF
Multiple Models: S55TPG, S55TPE

| | |
|---------------------------------------|---|
| Report Type: Amended Report | Product Type: Waterproof Wi-Fi Socket |
| Report Number: | <u>RDG201223011A1</u> |
| Report Date: | <u>2021-01-28</u> |
| Reviewed By: | Allen Qiao RF Supervisor |
| Test Laboratory: | Bay Area Compliance Laboratories Corp. (Dongguan) No.12, Pulong East 1 st Road, Tangxia Town, Dongguan, Guangdong, China Tel: +86-769-86858888 Fax: +86-769-86858891 www.baclcorp.com.cn |

TABLE OF CONTENTS

DOCUMENT REVISION HISTORY3
 DECLARATIONS.....3
EXHIBIT A – EUT PHOTOGRAPHS4
BELOW IS THE ORIGINAL REPORT5

FINAL

DOCUMENT REVISION HISTORY

| Revision Number | Report Number | Description of Revision | Date of Revision |
|-----------------|----------------|-------------------------|------------------|
| 0 | RDG180809003 | Original Report | 2018-08-30 |
| 1 | RDG201223011A1 | Amended Report | 2021-01-28 |

Note: This is the amended report application which was based on the original report. The differences between them as following:

- 1) Change the Applicant's address to 1001, BLDG8, Lianhua Industrial Park, shenzhen, GD, China.
- 2) Upgrade the standard to EN IEC 62311:2020
- 3) Changed the bridge rectifiers.

The change between the previous equipment and the current equipment is stated and guaranteed by the applicant. The difference between them will not affect the test items, we will keep all of the test results, and update EUT photos.

Declarations

BACL is not responsible for the authenticity of any test data provided by the applicant. Data included from the applicant that may affect test results are marked with a triangle symbol "▲". Customer model name, addresses, names, trademarks etc. are not considered data.

Unless otherwise stated the results shown in this test report refer only to the sample(s) tested.

Otherwise required by the applicant or Product Regulations, Decision Rule in this report did not consider the uncertainty.

The extended uncertainty given in this report is obtained by combining the standard uncertainty times the coverage factor K with the 95% confidence interval.

This report cannot be reproduced except in full, without prior written approval of the Company.

This report is valid only with a valid digital signature. The digital signature may be available only under the Adobe software above version 7.0.

This report may contain data that are not covered by the accreditation scope and shall be marked with an asterisk "★".

EXHIBIT A – EUT PHOTOGRAPHS

For photos in this section, please refer to report No.: RDG201223011-02A1 EXHIBIT A.

FINNAL

BELOW IS THE ORIGINAL REPORT

EN 62311:2008
ASSESSMENT REPORT

For

Shenzhen Sonoff Technologies Co.,Ltd.

Room 1001, 10F, Building 8, Lianhua Industrial Park, Longyuan Road, Longhua District,
Shenzhen, GD, China

Tested Model: S55TPF
Multiple Models: S55TPG, S55TPE

| | |
|--|---|
| Report Type: Original Report | Product Type: Waterproof Wi-Fi Socket |
| Report Number: | RDG180809003 |
| Report Date: | 2018-08-30 |
| Reviewed By: | Allen Qiao RF Supervisor <i>Allen Qiao</i> |
| Test Laboratory: | Bay Area Compliance Laboratories Corp. (Dongguan) No.69 Pulongcun, Puxinhu Industry Area, Tangxia, Dongguan, Guangdong, China Tel: +86-769-86858888 Fax: +86-769-86858891 www.baclcorp.com.cn |

Note: This test report is prepared for the customer shown above and for the device described herein. It may not be duplicated or used in part without prior written consent from Bay Area Compliance Laboratories Corp. (Dongguan).

TABLE OF CONTENTS

| | |
|---|----------|
| GENERAL INFORMATION..... | 3 |
| PRODUCT DESCRIPTION FOR EQUIPMENT UNDER TEST (EUT)..... | 3 |
| OBJECTIVE | 3 |
| RELATED SUBMITTAL(S)/GRANT(S)..... | 3 |
| TEST METHODOLOGY | 3 |
| TECHNICAL REQUIREMENTS SPECIFICATION IN EN 62311..... | 4 |
| TEST DATA | 5 |
| EXHIBIT A - EUT PHOTOGRAPHS..... | 6 |

FINAL

GENERAL INFORMATION

Product Description for Equipment under Test (EUT)

| | |
|-----------------------------|-------------------------|
| EUT Name: | Waterproof Wi-Fi Socket |
| EUT Model: | S55TPF |
| Multiple Models: | S55TPG, S55TPE |
| Rated Input Voltage: | 100~240Vac |
| External Dimension: | 86mm(L)*69mm(W)*65mm(H) |
| Serial Number: | 180809003 |
| EUT Received Date: | 2018.08.10 |

Note: The series product, models S55TPG, S55TPE, S55TPF are electrically identical, we selected S55TPF for fully testing. The difference between them was explained in the declaration letter.

Objective

This report is prepared on behalf of *Shenzhen Sonoff Technologies Co.,Ltd.* in accordance with EN 62311:2008, Generic standard to demonstrate the compliance of electronic and electrical apparatus with the basic restrictions related to human exposure to electromagnetic fields (0 Hz–300 GHz) is to demonstrate the compliance of apparatus with the basic restrictions or reference levels on exposure of the general public related to electric, magnetic, electromagnetic fields as well as induced and contact current.

The objective is to determine the compliance of EUT with EN 62311:2008.

Related Submittal(s)/Grant(s)

No related submittal(s).

Test Methodology

All measurements contained in this report were conducted with EN 62311:2008.

Technical Requirements Specification in EN 62311

General Description of Applied Standards

EN 62311 Generic standard to demonstrate the compliance of electronic and electrical apparatus with the basic restrictions related to human exposure to electromagnetic fields (0 Hz–300 GHz) is to demonstrate the compliance of apparatus with the basic restrictions or reference levels on exposure of the general public related to electric, magnetic, electromagnetic fields as well as induced and contact current.

RF Exposure Evaluation

Limit:

According to EN 62311, the criteria listed in the below table shall be used to evaluate the environmental impact of human exposure to radio-frequency (RF) radiation as specified table 2 of Council Recommendation 1999/519/EC.

Reference levels for electric, magnetic and electromagnetic fields
(0 Hz to 300 GHz, unperturbed rms values)

| Frequency range | E-field strength (V/m) | H-field strength (A/m) | B-field(μ T) | Equivalent plane wave power density $S_{eq}(W/m^2)$ |
|-----------------|---------------------------|---------------------------|---------------------|---|
| 0-1 Hz | - | $3,2 \times 10^4$ | 4×10^4 | - |
| 1-8 Hz | 10 000 | $3,2 \times 10^4/f^2$ | $4 \times 10^4/f^2$ | - |
| 8-25 Hz | 10 000 | 4 000/f | 5 000/f | - |
| 0,025-0,8 kHz | 250/f | 4/f | 5/f | - |
| 0,8-3 kHz | 250/f | 5 | 6,25 | - |
| 3-150 kHz | 87 | 5 | 6,25 | - |
| 0,15-1 MHz | 87 | 0,73/f | 0,92/f | - |
| 1-10 MHz | $87/f^{1/2}$ | 0,73/f | 0,92/f | - |
| 10-400 MHz | 28 | 0,073 | 0,092 | 2 |
| 400-2 000 MHz | $1,375 f^{1/2}$ | $0,0037 f^{1/2}$ | $0,0046 f^{1/2}$ | f/200 |
| 2-300 GHz | 61 | 0,16 | 0,20 | 10 |

Notes:

- f as indicated in the frequency range column.

Test method

The antenna of the product, under normal use condition is at least 20cm away from the body of the user. Warning statement of the user for keeping 20cm separation distance and the prohibition of operating to a person has been printed on the user manual. So, this product under normal use is located on electromagnetic far field between the human body.

Far Field Calculation Formula

$$E = \frac{\sqrt{30PG(\theta, \phi)}}{r}$$

G= antenna gain relative to an isotropic antenna

θ, ϕ = elevation and azimuth angles to point of investigation

r= distance from observation point to the antenna

Test Data

Test Mode: Transmitting

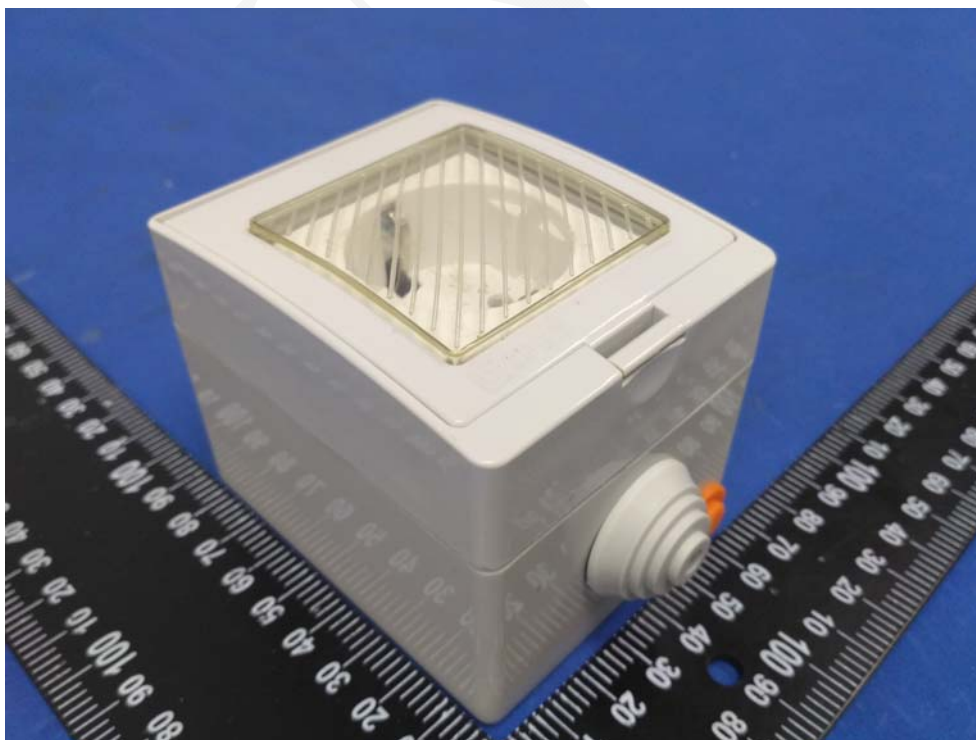
| Mode | EIRP | EIRP | E-Field Strength | E-Field Limit | Result |
|-----------|-------|------|------------------|---------------|--------|
| | (dBm) | (W) | (V/m) | (V/m) | |
| 2.4G WIFI | 17.18 | 0.05 | 6.12 | 61 | Pass |

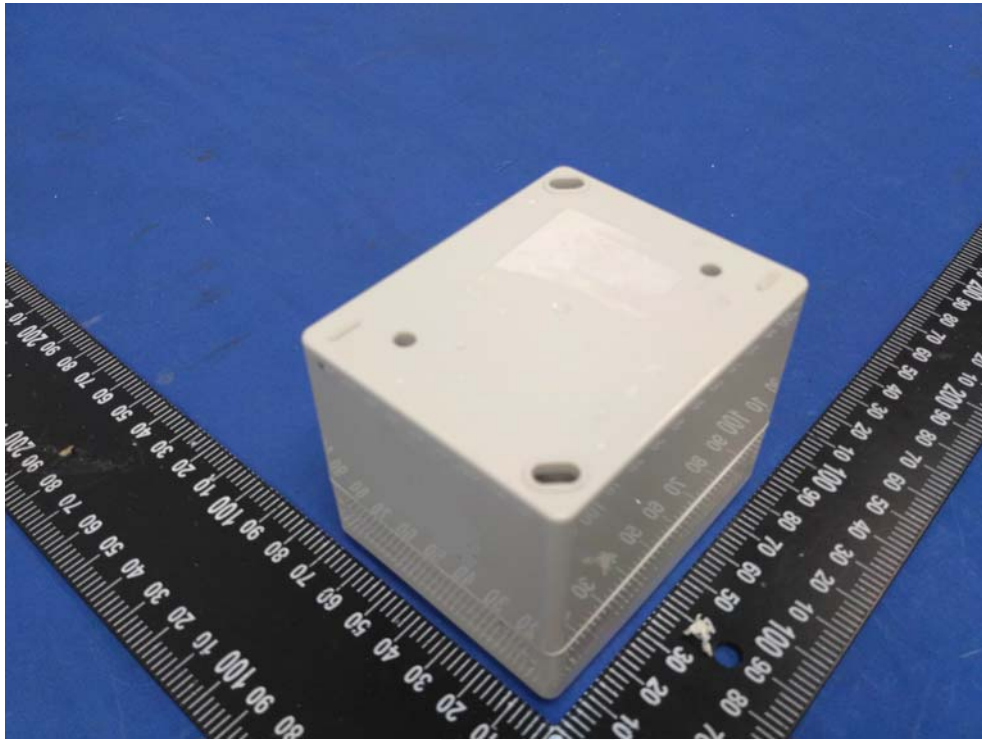
Note:

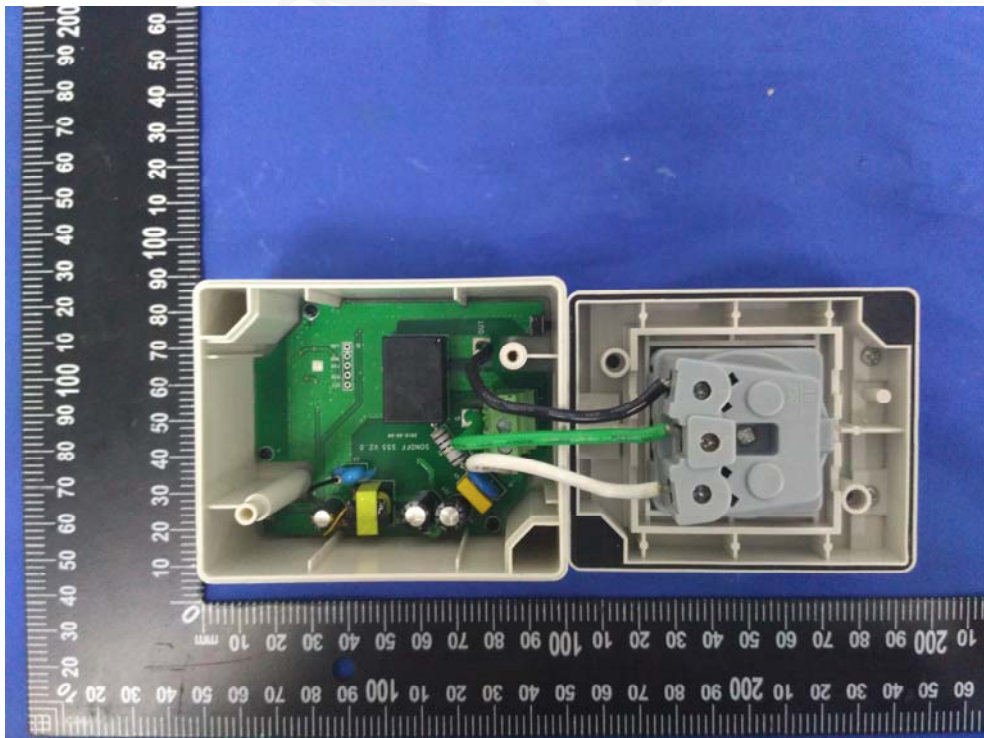
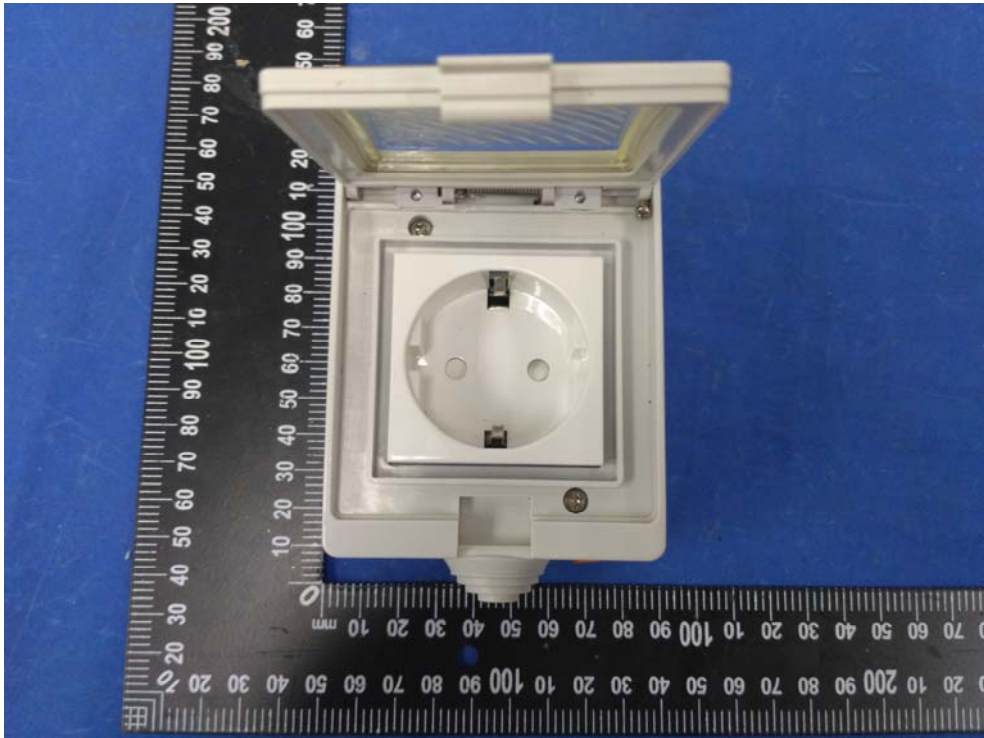
The distance from observation point to the antenna is 20 cm.

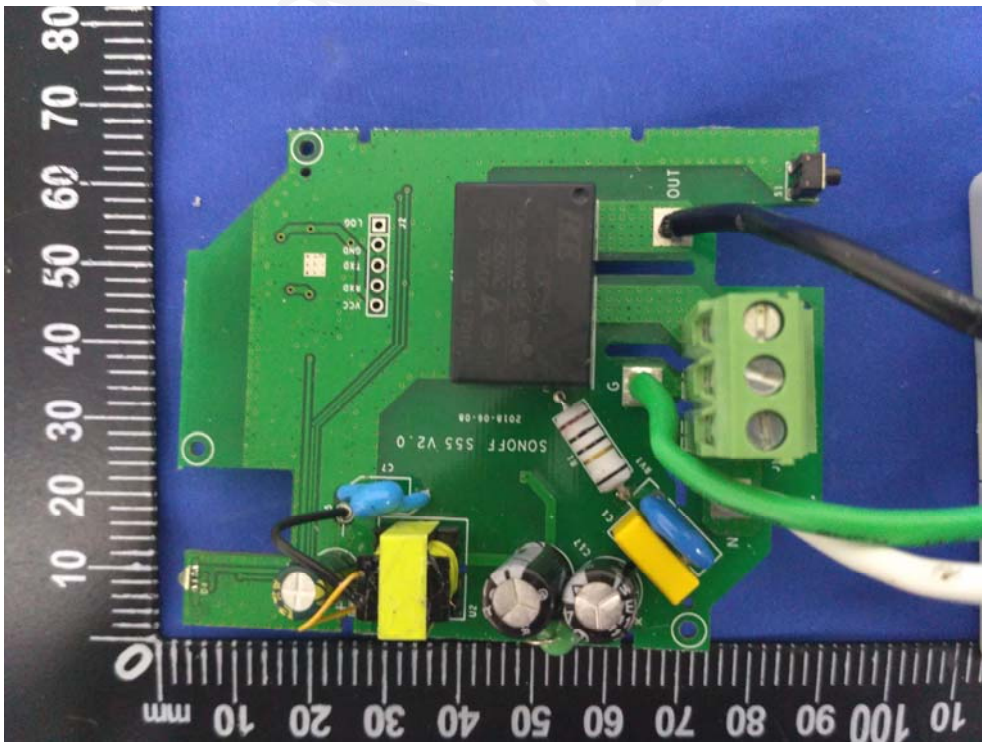
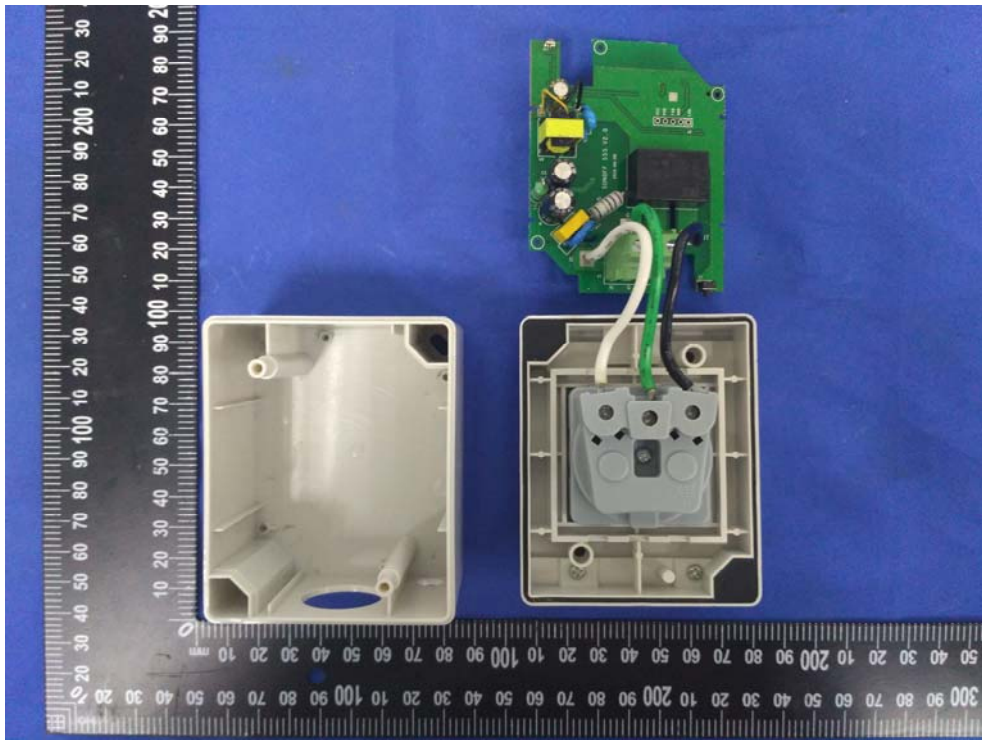
Conclusion: Compliance

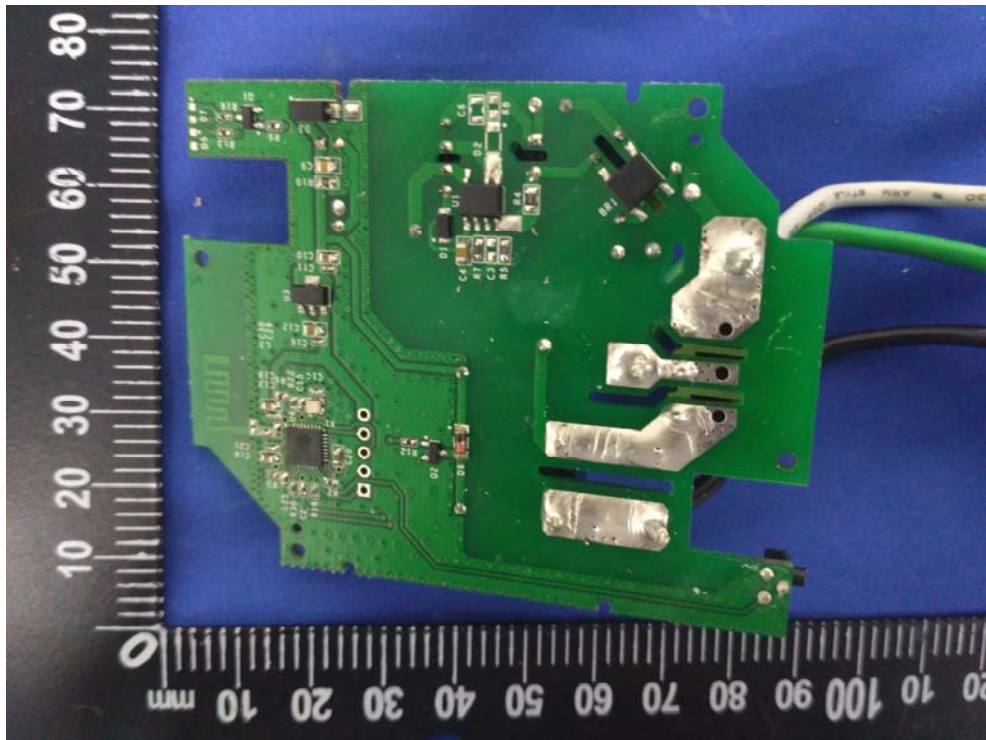
EXHIBIT A - EUT PHOTOGRAPHS



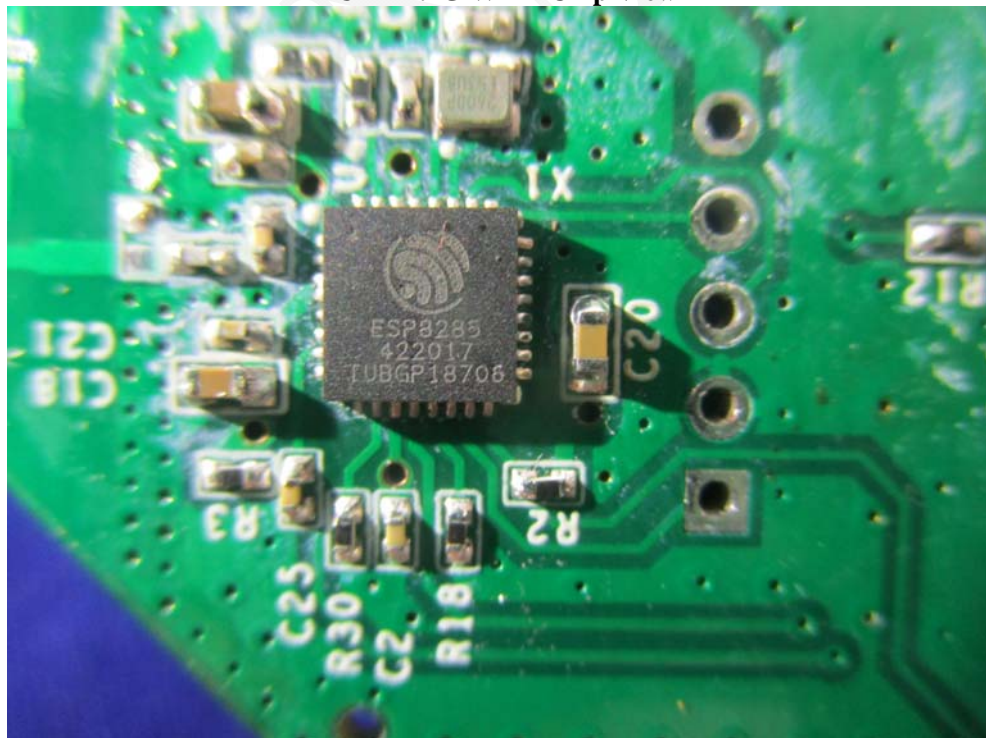




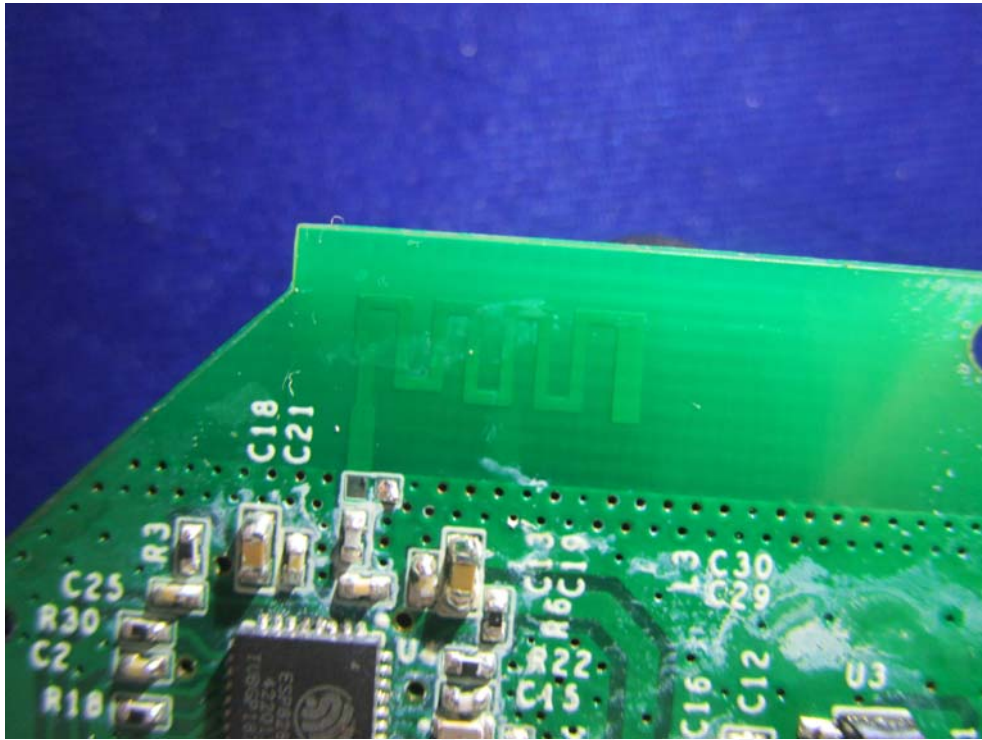




EUT – 2.4G Wi-Fi Chip View



EUT – Antenna View



*******END OF REPORT*******